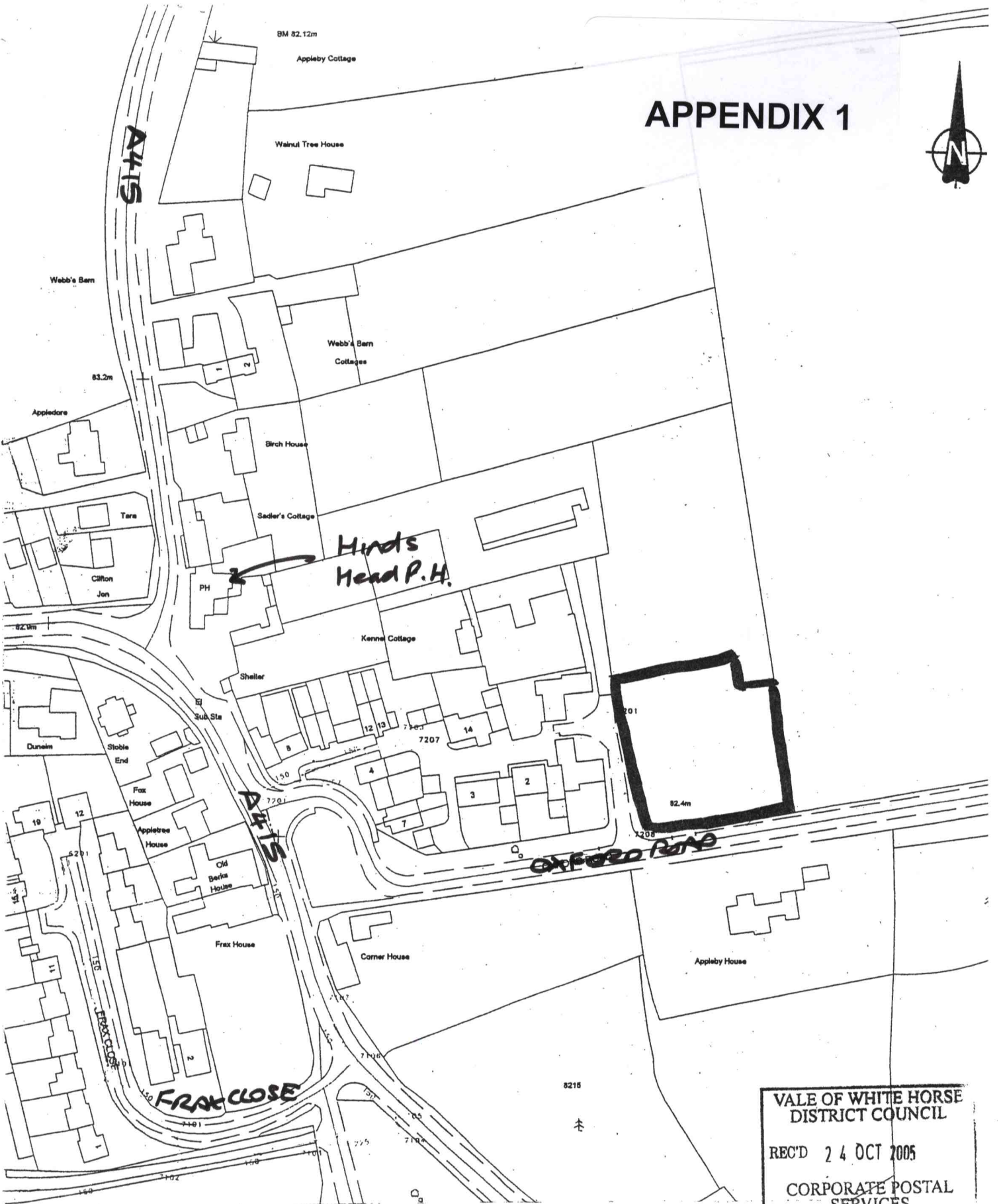


# APPENDIX 1



VALE OF WHITE HORSE  
DISTRICT COUNCIL  
REC'D 24 OCT 2005  
CORPORATE POSTAL  
SERVICES

*KBAL/19343*

**sovereign housing**  
forming partnerships

Development & Asset Management Dept,  
Trinity House, Kennetside,  
Newbury, Berkshire, RG14 5EH  
Tel: 01635 550222 Fax: 01635 277471  
w: [www.sovereign.org.uk](http://www.sovereign.org.uk)  
e: [enquiries@sovereign.org.uk](mailto:enquiries@sovereign.org.uk)  
Sovereign Housing Association is Charitable

Drawing  
**Location Plan**  
Project  
**Oxford Road  
Kingston Bagpuize**

Scale  
**1 : 1500**  
Date  
**11 : 10 : 05**  
Drawn **AT Drake**  
Project No.  
**1253 - 7**

St John the Baptist  
Church

0710

G1, G2 Type House 4 No 2 Bed 4 Person 77m<sup>2</sup> Plots 2-5  
 K4, K5 Type House 2 No 3 Bed 5 Person 88m<sup>2</sup> Plots 1, 6  
 Total Units 6 No

Plots 1-3 Shared Ownership  
 Plots 4-6 Rented



VALE OF WHITE HORSE  
 DISTRICT COUNCIL  
 RECD 24 OCT 2005  
 CORPORATE POSTAL  
 SERVICES

Rev. B. 10.10.05 General additions.  
 Rev. A. 03.03.05 Planners comments added.

KSBA1933

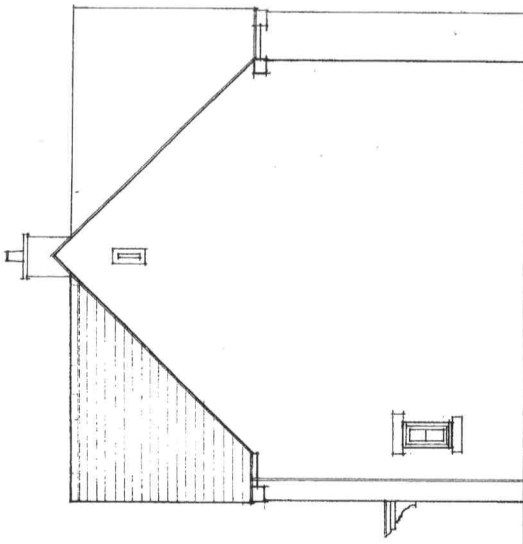
Drawing	Scale
Site Layout	1 : 500
Date	07 : 03 : 05
Project	Drawn A T Drake
	Project No. 1253 - 1 B

**sovereign housing**  
 forming partnerships

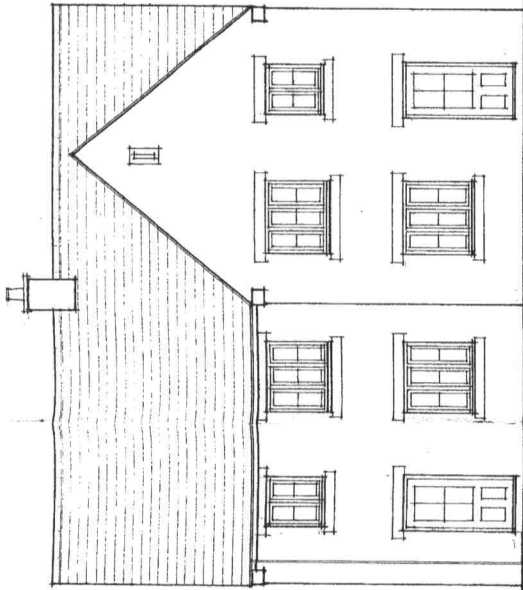
Development & Asset Management Dept,  
 Trinity House, Kenneilside,  
 Newbury, Berkshire, RG14 5EH  
 Tel: 01635 560222 Fax: 01635 277471  
 e: enquiries@sovereign.org.uk  
 Sovereign Housing Association is Charitable

OXFORD ROAD

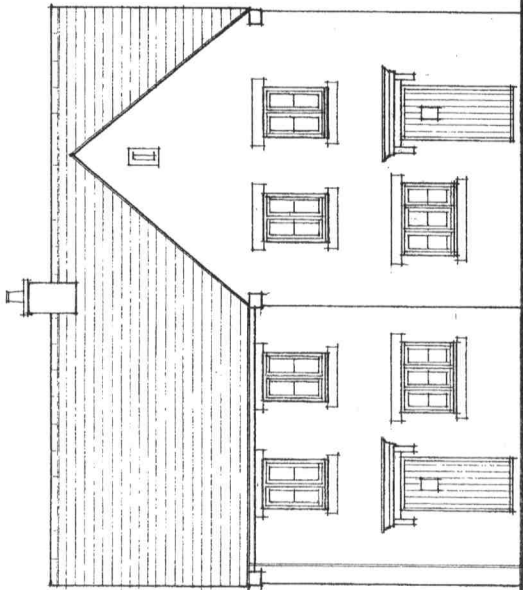




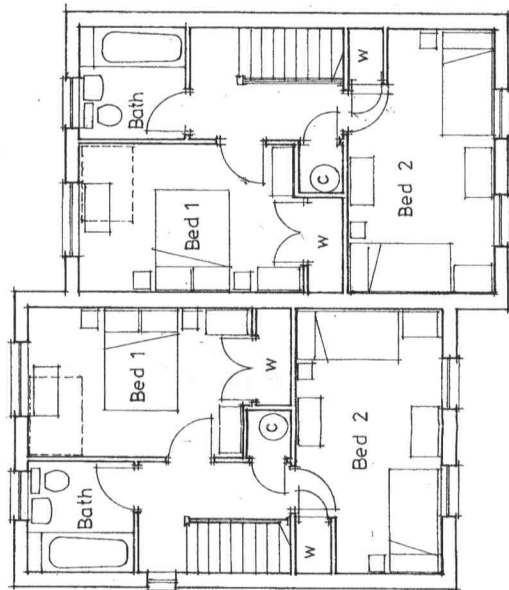
Side (East)



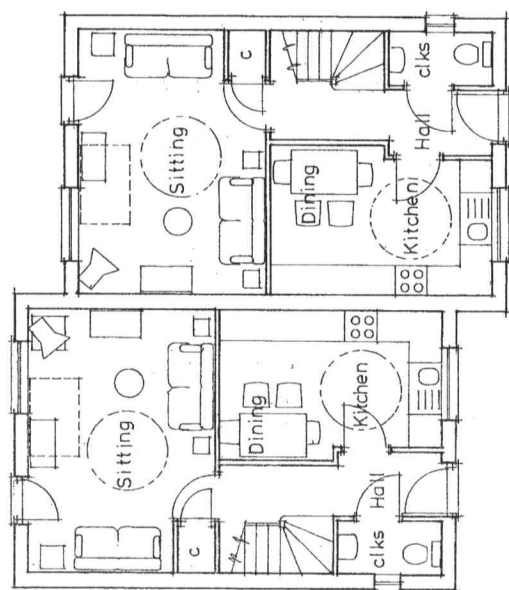
Rear (North)



Front (South Elevation)



First Floor



Ground Floor

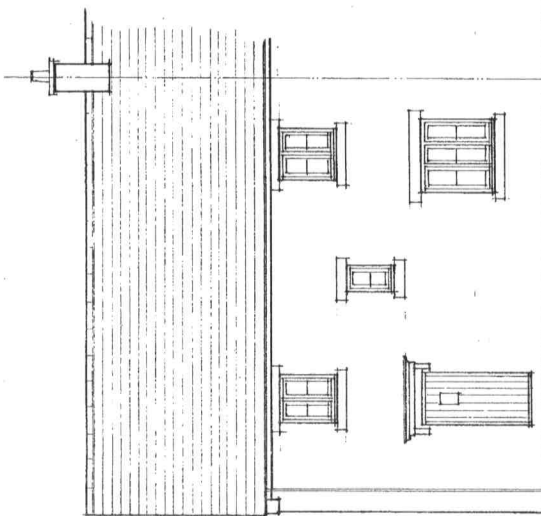
VALE OF WHITE HORSE  
DISTRICT COUNCIL  
REC'D 24 OCT 2005  
CORPORATE POSTAL  
SERVICES

Plots 4 / 5

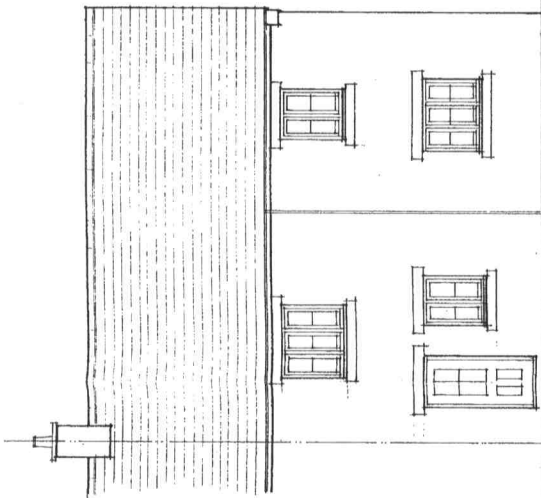
*mod/19312*

Scale	1 : 100
Date	07 : 03 : 05
Drawn	A T Drake
Project No.	1253 - 2
Drawing	House Type G1 - 2 Bed 4 Person
Project	Oxford Road Kingston Bagpuize

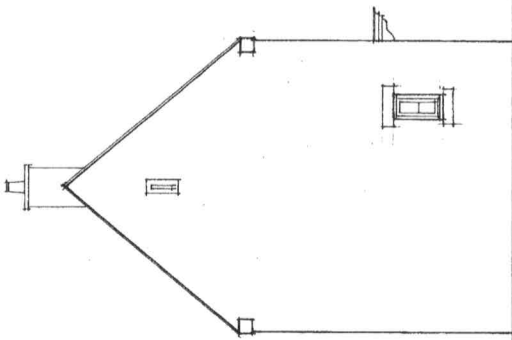
**sovereign housing**  
forming partnerships  
Development & Asset Management Dept.  
The Housing Foundation  
Newbury, Berkshire, RG14 5EH  
Tel: 01635 560222 Fax: 01635 27471  
w: www.sovereign.org.uk  
e: enquiries@sovereign.org.uk  
Sovereign Housing Association is Charitable



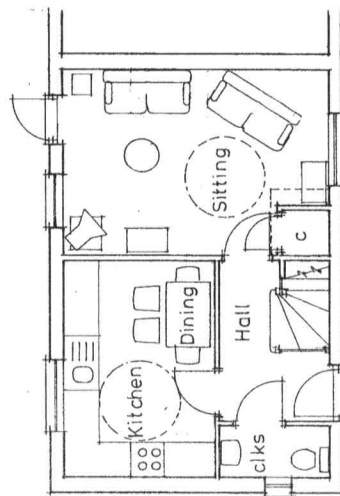
Front (North Elevation)



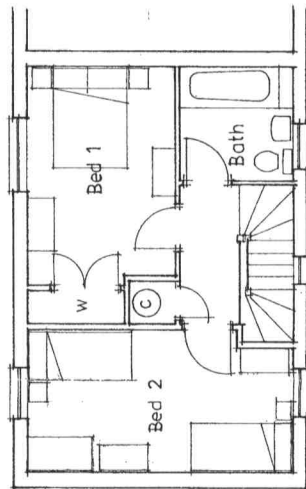
Rear (South)



Side (East)



Ground Floor



First Floor

VALE OF WHITE HORSE  
DISTRICT COUNCIL  
RECD 24 OCT 2005  
CORPORATE POSTAL  
SERVICES

Plot 2  
Plot 3 handed

*VSA/15/13*

Scale	1 : 100
Date	07 : 03 : 05
Drawn	A T Drake
Project No.	1253 - 3
House Type	G2 --
Bedrooms	2 Bed 4 Person
Project	Oxford Road Kingston Bagpuize

**sovereign housing**  
forming partnerships

Development & Asset Management Dept,  
Trinity House, Kennet-side,  
Newbury, Berkshire, RG14 6EH  
Tel: 01635 550222 Fax: 01635 277471  
W: www.sovereign.org.uk  
E: enquiries@sovereign.org.uk  
Sovereign Housing Association is Charitable